



TOWER HOUSE



Imagine having a Victorian castellated tower in your garden; along with jaw-dropping views, remarkable heritage, comfort, and convenience. Tower House offers all of this and more, nestled in a secluded location on the fringes of Silverdale.

Enclosed within a completely private walled garden and brimming with history, the features of this beloved home and the accompanying Lindeth Tower are simply wonderful.



“ People often describe Tower House as ‘charming’, along with ‘quirky’, ‘unique’, and ‘romantic’. It’s all of those, and just a very special place to be.”

Idyllically located in an Area of Outstanding Natural Beauty, with views across the sands of Morecambe Bay, this Grade II listed home is an unconventional magical hideaway. Immerse yourself in the 19th Century charm of Tower House’s sash windows, exposed beams, and enchanting wisteria gracefully adorning the walls. Come and discover the best of both worlds; a perfect blend of modern-day comfort and historic delights, as you meet this special home.



Pull into the driveway where there is ample parking, or walk past the garage to the main entrance where rambling flowers decorate the gate.

Step through into the paved courtyard, where herbs grow outside the kitchen window and mature plants provide a lush tapestry of colours, and into the spacious porch and utility area.



With windows running the length of the wall, the area is bright and welcoming. Lakeland slate flooring makes it easy to clean up muddy paws or boots, and the accompanying slate worktop with room for a washer, dryer and sink is a welcome addition. With ample space for seating and storage, hang up your jackets and coats, shake off umbrellas, and ease off wellingtons, before making your way through the front door.

W A R M & C O S Y



“ The kitchen truly is the heart of the home; you’ll always find people sitting at the table or warming up at the Aga. ”



Warm and welcoming, terracotta tiles extend throughout the dining kitchen where an Aga sits beneath a wooden mantel emitting a comforting and cosy heat. With room for a large dining table and chairs, take a seat as you watch the chef cook up feasts in the spacious fitted kitchen.

Cream cabinetry lines the walls offering plenty of storage, and the dual-aspect windows fill the room with light and provide stunning views. Perfect for social gatherings and enjoying culinary delights, invite the family over for dinner and fill the room with chatter and laughter.



Through the door to the dining room, an additional table and chairs await those special get-togethers. A large window with vistas out over the bay illuminates the room, and the bright white walls create an airy ambience.

Continue into the hallway where a rich maple wood floor extends to the cloakroom on your right, with coat hanging space, washbasin, and WC, complemented by striking deep blue geometric Victorian-style wall tiles.



Across the hallway, the beautifully proportioned living room awaits, ready to immerse you in comfort with deep carpets and calming neutral decor. The high ceiling embellished by a picture rail and cornicing, along with the sash windows, provide a timeless elegance. Chandelier lighting hangs from the ceiling rose, and the impressive marble fireplace with its open fire makes for a stunning focal point.

In cooler months, gather around the dancing flames as you read a book or play a board game with the family. With ample room for seating, spend long weekends relaxing in oversized armchairs as you fully unwind.



C H A R A C T E R F U L



“ The garden room is a wonderful place to just sit and soak in the birdsong and the changing seasons in the garden. ”

Retrace your steps back to the hallway and take a moment to enjoy the seating area beside the gallery staircase with open spindles, before continuing and stepping up into the sunlit garden room. Panoramic views of the tower and walled garden embrace you as you emerge into the room. With large French doors opening out onto the lush lawn and mature foliage beyond, let go of all your cares as you relax in the calming and peaceful atmosphere.

Watch the wildlife as you relax dreamily in a comfy chair and let the boundaries between indoors and outdoors blur.

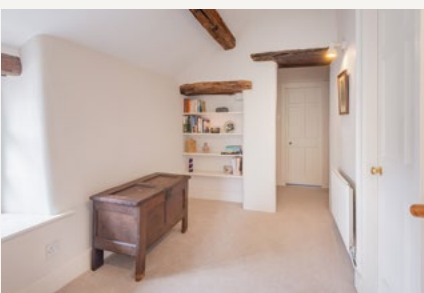


THE VIEW FROM THE TOWER

W H E R E D R E A M S A R E M A D E

Go back toward the landing and ascend the stairs to the upper floor. Bright and light from the large window with views of Lindeth Tower, the landing has bags of space and a charming window seat with vistas across the bay.

Take the steps to your right where two large bedrooms await. Both spacious and bright, with views of the garden and plenty of room for storage and seating, the bedrooms are characterful and peaceful, ready to soothe you into a restful slumber.



Retrace your steps back to the landing, take a right under an exposed beam, and into a large family bathroom comprising a whirlpool bath, washbasin, WC, along with plenty of storage space. Peep into the linen cupboard on your left before entering the second family bathroom which features built-in storage, a large shower, a heated towel rail, a washbasin, and a WC.

Another spacious bedroom awaits next door where exposed beams decorate the ceiling, and a large window looks out onto the courtyard.



Restored in 1966 by
ANNE MARGARET HORSLEY
Erected in 1842 by
H. P. FLEETWOOD Esq.



As if taken from the pages of a fairytale book and made into reality, Lindeth Tower stands in the extensive gardens behind Tower House.

Built in 1842 as an elaborate summer house, this Grade II listed building has been meticulously refurbished by the current owners, along with the wonderful walled garden which surrounds it. During the 1840s and 1850s, the celebrated novelist Elizabeth Gaskell used Lindeth Tower as a writing retreat while working on literary classics such as Cranford, Wives and Daughters, Ruth, and The Life of Charlotte Brontë.

BREATHTAKING VIEWS



Ascend the paddle steps to the cosy living room, boasting stunning views of Morecambe Bay. An open log fire is ready for cooler nights and comfortable armchairs evoke evenings of relaxing in the warmth as you sip from a hot drink.

In the warmer months, climb the stairs to the rooftop patio where you can enjoy the incredible sunsets over Morecambe Bay and marvel at your own private ever-changing scenes. And if you're interested in a significant second income, the Tower has also proved to be a hugely popular holiday let.



Follow in her footsteps by ascending the stone steps up to the impressive black and white studded door that leads you into the welcoming kitchen-diner.

Featuring white cabinetry providing storage, along with a table and chairs facing the window to enjoy the view of the garden, the kitchen is designed to be simple and functional. The original slate floor leads around to the bathroom featuring a shower, WC, and a washbasin with storage.

Take the stairs to the first floor and note the exposed stonework before entering the double bedroom with warm wooden floors, storage space and triple aspect windows. Enjoy restful sleep in the tranquil room and awaken to glorious views of the garden.



A detached garage sits beside Tower House, ready to store vehicles or sports equipment. There's also a little store for gardening tools, along with a larger log store which also houses the boiler.

Enclosed by magnificent stone walls and filled with mature plants and foliage, the secluded garden is a private oasis. Dine alfresco on the patio area outside the garden room, relax on the raised terrace overlooking the bay, and skip over the stepping stones that lead to Lindeth Tower. Climb the steps to the viewing platform at the end of the garden and take in the many trees and plants that have been lovingly nurtured to provide such an idyllic setting.



“ The garden is all about family occasions: the perfect setting for everything from a wedding marquee to an impromptu game of croquet, or just sitting back soaking in the peace. ”

An extensive lawn, beautifully kept, stretches out beside Lindeth Tower where the borders surrounding it overflow with shrubs and flowers.

Invite friends over to play games, enjoy picnics, and have spontaneous summer barbeques or simply stretch out and enjoy the large space in peaceful privacy.

G L O R I O U S G A R D E N S

OUT AND ABOUT

ASK THE OWNERS

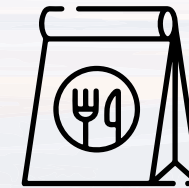
Where do I go when I need:

Set in an Area of Outstanding Natural Beauty, stunning scenery and impressive coastlines are the backdrop to your daily activities. Be it taking the short stroll into the village or grabbing your clubs to enjoy a round at Silverdale Golf Club, which is just a mile away.

Walks and hikes abound from the doorstep in every direction; explore the cliff top pathways and Giant's Seat at Jack Scout, head up over Heald Brow to marvel at the stunning views, or meander through the woods as you climb to the Pepperpot.

Take a stroll to Leighton Moss, the largest reed bed in the northwest, and spend an afternoon watching the birds and wildlife that include otters, egrets, bittern, and red deer. Jump in the car, and with just a short drive you have the whole of the Lake District and Yorkshire Dales National Parks to explore.

Commute conveniently, with the M6 and Silverdale train station only minutes away and revel in your homebound journey, knowing that you're coming home to the secluded sanctuary and magical, charming hideaway that is Tower House and Lindeth Tower.



Supermarket shop?

Booths and other local shops a 15-minute drive away in Carnforth



Restaurant?

Cinnamon Spice Indian restaurant and takeaway in nearby Silverdale village



Café?

Wolf and Us café a 2-minute walk away has great coffee and cakes with indoor and outdoor seating



Walk?

Heald Brow, a great circular walk with spectacular views



Milk, bread?

The local Co-op in the village- so convenient for essentials



Pub?

The lovely and quaint Royal Oak pub in the village, a short walk away



Train station?

Silverdale train station is 1.5 miles away with links to Lancaster and Barrow-in-Furness

Finer Details

Home:

- Built between 1700 and 1816
- The tower was built in 1842
- Grade 2 Listed
- Council tax band F
- Freehold
- House: 3 bedrooms, 2 bathrooms
- Tower: 1 bedroom, 1 bathroom, kitchen, living room
- Kitchen with Aga

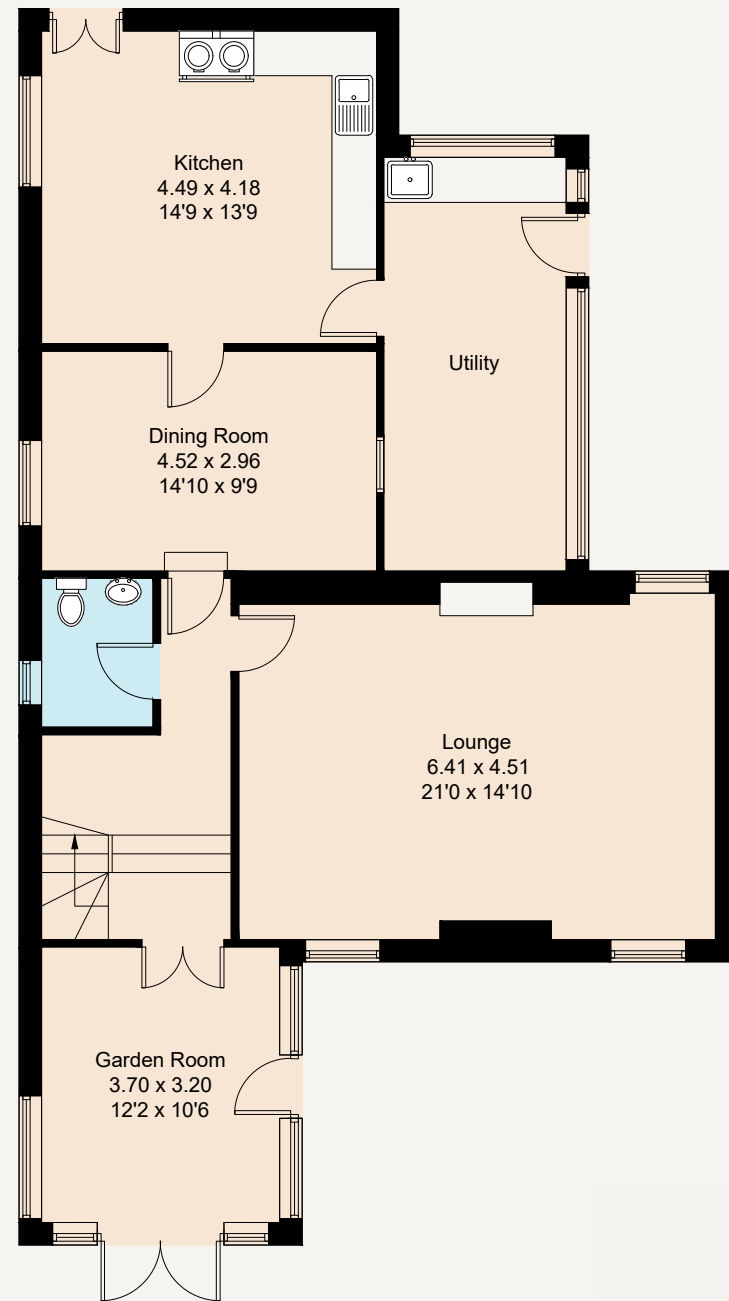
Services:

- Mains: gas, electricity and water
- Drainage: septic tank

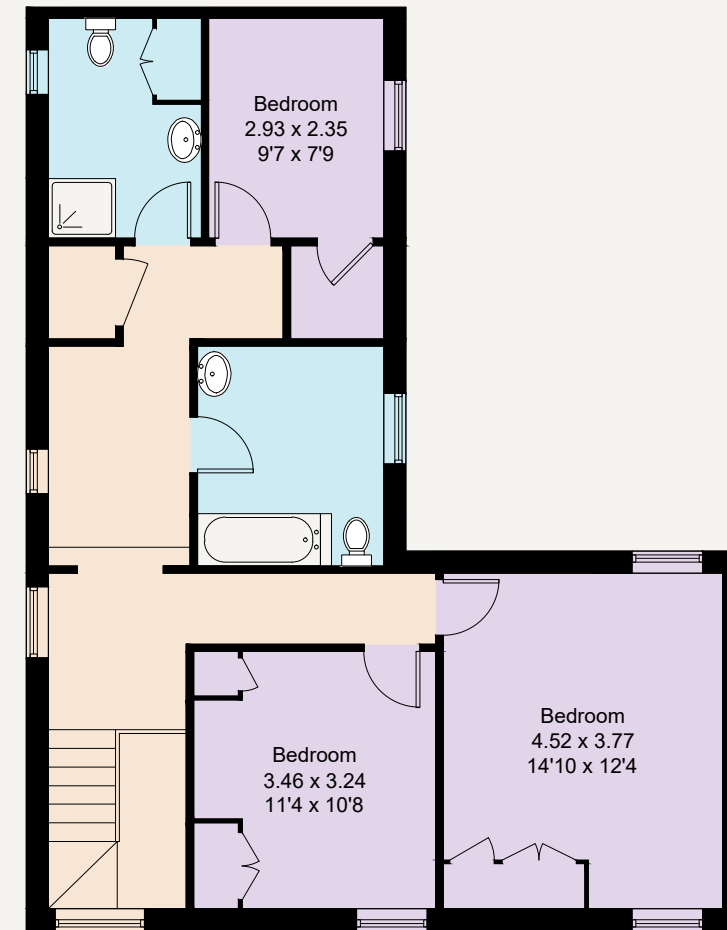
Grounds and Location:

- Private gated driveway
- South facing
- Large patio areas
- Large gardens
- Separate, picturesque and historical tower in the garden with future letting potential
- Fantastic views over the bay
- 1 acre plot
- Wolf & Us Café, the Royal, bakeries and fish and chips all in the lovely village of Silverdale

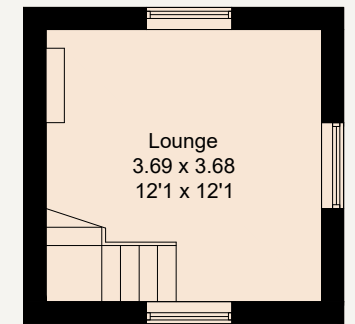
Ground Floor



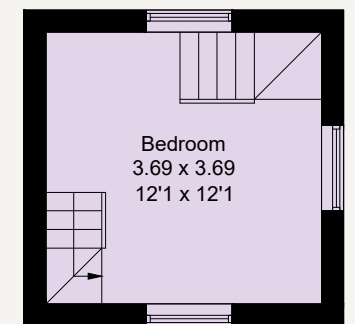
First Floor



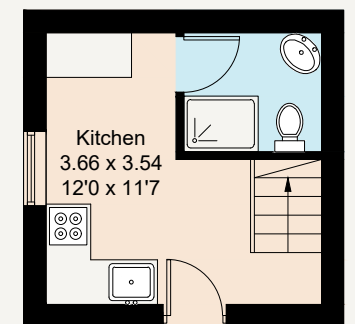
Tower - Second Floor



Tower - First Floor



Tower - Ground Floor



Approximate Gross Internal Area
 Ground Floor = 103.8 sq m / 1117 sq ft
 First Floor = 74.2 sq m / 799 sq ft
 Tower = 40.3 sq m / 434 sq ft
 Total = 218.3 sq m / 2350 sq ft

Illustration for identification purposes only, measurements are approximate, not to scale. FloorplansUsketch.com © 2023 (ID992560)

Score	Energy rating	Current	Potential
92+	A		
81-91	B		
69-80	C		78 C
55-68	D		
39-54	E	51 E	
21-38	F		
1-20	G		

TOWER HOUSE



TOWER HOUSE

Tower House, Silverdale, Lancashire, LA5 0UA

From the M6 junction 35, follow the A6 heading North. After 3.5 miles, turn left towards Silverdale and Yealand Redmayne. In half a mile, turn right at the T junction towards Silverdale. Follow the road for 2 miles, then take a left-hand turn at the T-junction towards Silverdale. Take the second left, towards Jenny Brown's Point. In half a mile, you'll see the Tower ahead of you. Pass Wolf & Us café on the right, then turn left at the end of the road where Hollins Ln meets Lindeth Rd. The home can be seen on the right-hand side.



WHAT3WORDS: [cleansed.plugged.silk](https://www.what3words.com/cleansed.plugged.silk)

To view Tower House

call: 015394 88811 | email: team@ashdownjones.co.uk

ASHDOWN JONES
THE LAKE DISTRICT



SCAN ME
TO FIND
OUT MORE