



# Grandsire, Lipwood, Windermere, LA23 1BY

£600,000 Leasehold

3 Bedroom Apartment

## Description

Home:

- Stunning 3 bedroom top floor apartment
- Converted into luxury apartments in 2020
- Lots of windows to let the light flood through the home
- Beautiful open-plan kitchen/dining area

Services:

- Mains electricity, gas, water and drainage
- Fast internet speeds
- All phone networks cover this area

Grounds & Location:

- 2-minute walk from Windermere
- Great local walks around the area
- Stunning views of the fells are surrounding areas
- Private parking for 2 cars

Make your way down the leafy street and pull into the designated parking area at the historic Lipwood House, beside the lush, green lawn. A carpeted, spindled staircase takes you up toward Grandsire, where a warm and light welcome awaits.

Wooden flooring, bright white walls, and two contemporary pendant lights greet you as you step into this cosy and yet spacious loft apartment.



Turn left and make your way into the large, open-plan kitchen diner. Exposed beams accentuate the peaked roof, and heighten the sense of space in the area as well as creating a visually captivating feature.

Take a seat at the large dining table, ready to host dinner parties and social gatherings for any occasion before making your way into the kitchen. Sleek, white cabinetry lines the walls, above and below the countertops, offering plenty of space and storage. Cook up delicious treats and feasts where appliances include integrated dishwasher, fridge, freezer, and oven.

Flow through into the living area, where exposed beams line the high, vaulted ceiling against an exposed stone wall. A log-burner is ready to be lit on cooler evenings, ready for you to relax against and warm up after a day of adventuring on the Lake District fells.

Retrace your steps along the wooden floor, back to the landing, and continue into a large spacious bedroom with bright white walls and exposed beams. Discover the bedroom next door, filled with natural light and feature fireplace. Take a look at the views from the window, showcasing the fells before making your way into the family bathroom.

Sleek and stylish, with double sink, WC, heated towel rail, separate walk-in shower and bath, the room is the perfect place to start and end your day. Fill the bath with bubbles to enjoy a relaxing soak after a day out in the elements, or take a revitalising spritz in the rainfall shower.

Make your way into the principal suite, where a charming window seat beckons. Take a book and warm drink and spend lazy afternoons lost in the pages, and staring out at the views of the gardens below. With plenty of space, high ceilings and exposed

beams, the room is full of character and charm.

Discover the contemporary en-suite, with tiled floor and walls featuring washbasin, WC and walk-in, rainfall shower.

### Gardens and Grounds

Pull up into one of the two dedicated, private parking spaces, and make your way over to the communal, perfectly manicured, large lawn at the front of the home.

Brilliantly looked after by the management company, it means that everything is taken care of and allows you to enjoy the outside space in a maintenance-free way and without any of the worry.

Take out a picnic in the summer months where you can relax in the space. Invite friends over to relish in lazy afternoons soaking up the sunshine, sipping on a glass of fizz and enjoying some nibbles.

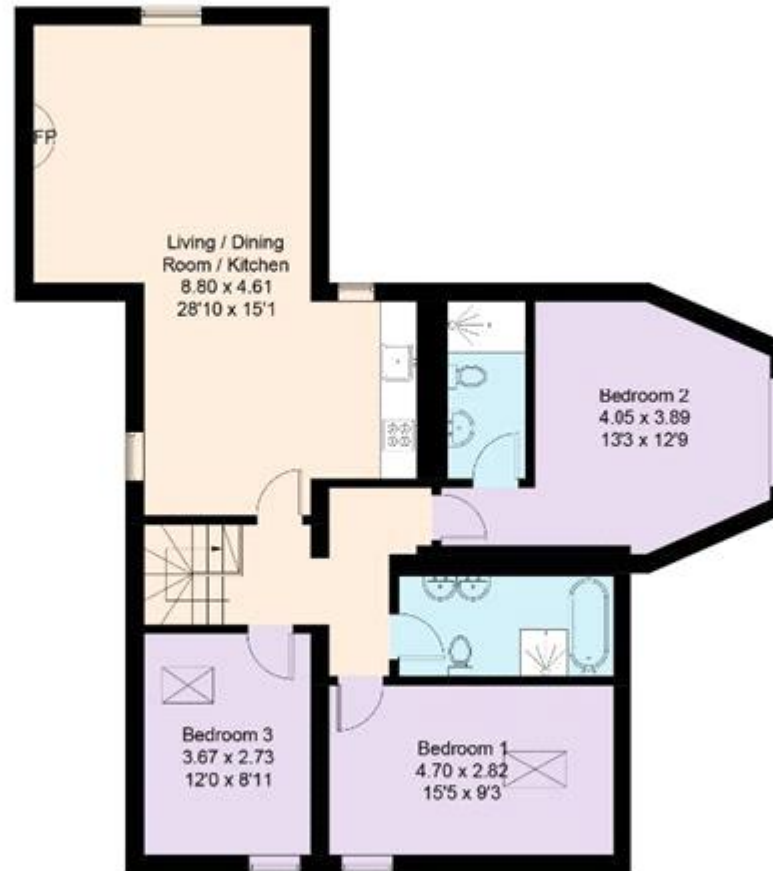
Enjoy your early morning coffee and some pastries, as you admire the surrounding foliage and trees and listen to the gentle sounds of the village as it comes to life.

\*\* For more photos and information, download the brochure on desktop. For your own hard copy brochure, or to book a viewing please call the team \*\*

Tenure: Leasehold

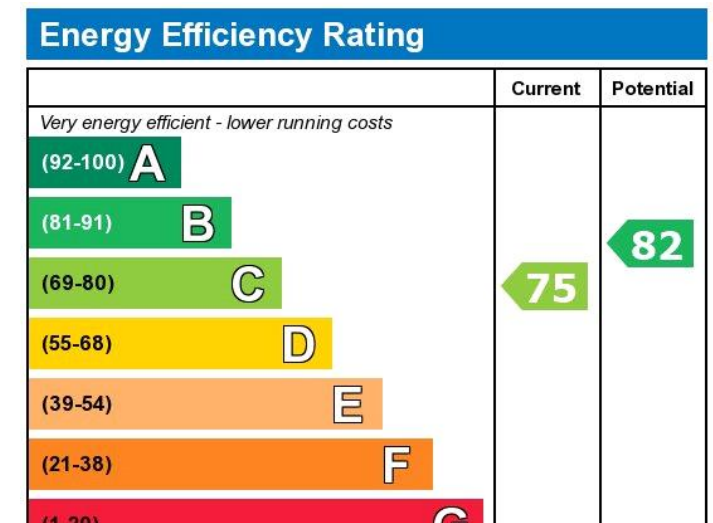
### **Tenure**

Leasehold



Approximate Gross Internal Area = 106 sq m / 1140 sq ft

Illustration for identification purposes only, measurements are approximate, not to scale. FloorplansUsketch.com © 2020 (ID649335)



Viewing by appointment only  
 AshdownJones - AshdownJones The Lakes  
 1C Low Cleabarrow, Windermere, Cumbria LA23 3ND  
 Tel: 015394 88811 Email: [team@ashdownjones.co.uk](mailto:team@ashdownjones.co.uk) Website:  
<https://www.ashdownjones.co.uk>

