



RED DEER LODGE
FINSTHWAITE



Wrapped in history and nestled in Finsthwaite, Red Deer Lodge offers the best of both worlds, a peaceful retreat that feels worlds away, yet perfectly placed for everything you need.

Once part of a 17th-century estate, built as the original barn for the farmhouse in 1650, this four-bedroom home rests on the edge of woodland and open fields.

Only minutes from Windermere, Bowness, Grasmere, and Hawkshead, this converted barn offers a unique blend of rustic charm and modern comforts in an ideal setting.





Pull off the quiet lane and onto the gravelled driveway, where there's room for 3 cars. Low stone walls edge the space, while mature planting and colourful flower beds bring charm and character. Follow the path to the front portico, where a solid, handsome door, framed by glazed side panels, sets the tone for the warmth and welcome waiting inside.



Welcome Home

Step into an open-plan space where character meets possibility. Overhead, original beams stretch across the ceiling, softened by the warm glow of scattered spotlights. Bright white walls amplify the natural light, while to the right, an exposed stone wall with a built-in bench adds a touch of rustic charm.

Currently set up as a games room, this versatile space invites imagination. With panelled walls and statement pendant lighting, it could just as easily become a cosy cinema snug, an additional lounge, or a creative retreat, whatever your lifestyle calls for. Cleverly tucked away, the washer and dryer sit neatly behind integrated cabinetry, as does the boiler, keeping everyday essentials out of sight and the space feeling calm and uncluttered. Contemporary in style, the downstairs cloakroom is both practical and polished. Refresh and revive in the generous walk-in shower, with WC and washbasin completing the clean, modern suite.



Sweet Dreams

Make your way into a spacious double bedroom, where the rustic beauty of an exposed stone wall and timber beams overhead bring warmth and authenticity. Perfect for guests or as a restful retreat of your own, it's a room filled with calmness and history.

Wander a little further down a characterful corridor, its walls lined in natural stone, and discover another double bedroom. Humming with heritage, this room features exposed beams across the ceiling, while the stonework continues in gentle rhythm along the walls. A perfectly placed window frames an ever-changing canvas, inviting in morning light, and an inbuilt storage cupboard is ready to keep all personal items organised.





“The living room is our favourite, as it’s a very social space where we all gather. It has wide windowsills that can be used for seating, looking over the village fields and watching the lambs play.”



Climb the stairs and step into the open-plan living and dining room, a breathtaking space where vaulted ceilings soar overhead and full-height beams carry the quiet echo of the barn’s past. Light floods in from both directions, casting a soft glow across the room and framing views of woodland and fields that shift with the seasons.

The heart of the upstairs, the living space, is where soft carpeting and generous proportions create an open, easy comfort. There’s space here for oversized sofas, armchairs, and quiet moments or lively conversations.

Flow into the dining area, where family meals stretch long into the evening and laughter lingers in the air. Whether you’re gathering over breakfast with the view or hosting a dinner by candlelight, this is a space made for connection.





Rest & Relax

To the right, a spacious double bedroom awaits. With its lofty ceiling, exposed stone wall, and timber beams, it's a room that feels both intimate and expansive. A window draws your eye to the countryside beyond, while built-in storage keeps everything effortlessly ordered. Next door, discover a second bedroom, a near mirror image, equally rich in character. High ceilings, timeworn beams and another stretch of stone wall bring depth and texture, making this a peaceful haven.

Flow into the family bathroom, a bright, contemporary space designed with both style and comfort in mind. Featuring a WC, and a washbasin with built-in storage that keeps surfaces clutter-free. The bath, complete with overhead shower, offers the best of both worlds for long soaks or quick morning routines.





A Feast for the Eyes

Step into the kitchen, where practicality meets contemporary design. Underfoot, vinyl flooring offers durability and ease, making it ideal for everyday living. Above and below the sleek quartz composite worktops, generous cabinetry keeps essentials tucked neatly away, while a toughened glass splashback behind the hob adds both function and a modern touch.

Fully equipped with high-spec Siemens appliances, this is a space designed for those who love to cook and entertain. Everything is here: a 70/30 fridge-freezer, fully integrated dishwasher, single multi-function oven, combination microwave, five-ring induction hob, and warming drawer. An Insinkerator, Franke filter tap, and Siemens extractor complete the setup. To the rear, a door leads to an enclosed porch, offering access to the garden beyond.



Garden Oasis

Tiered, tucked-away, and quietly spectacular, the outdoor spaces at Red Deer Lodge are as thoughtfully shaped as the home itself.

To the front, practicality greets you first with the gravelled parking for 3 vehicles, framed by low stone walls and mature planting that softens the edges and offers a warm, green welcome. Make your way up the stone steps that rise to the lower patio, a sheltered spot perfect for summer barbecues and easy-going evenings with friends. There's room here for a table, laughter, and the gentle rhythm of relaxed, outdoor living.

Climb a little higher and you'll arrive at the upper terrace, bathed in sunlight for most of the day. From this elevated position, the view unfolds in layers, first over the rooftops of Finsthwaite village, then across rolling fields, and finally towards the silhouette of St Peter's Church, where history lingers. Said to be the resting place of Bonnie Prince Charlie's daughter, known locally as the "Finsthwaite Princess."



View to Finsthwaite and Newby Bridge from Gummers How



Out & About

Red Deer Lodge might feel tucked away, but you're never far from adventure, a good pub, or a charming town to explore.

Take the 35-minute stroll along the scenic West Windermere Way and you'll find The Swan at Newby Bridge, a classic Lakeland pub where Sunday roasts and riverside drinks are always a good idea. Or if you fancy something closer, Lakeside is only 15 minutes on foot. Here, you're spoilt for choice of how to spend your time, linger over lunch at the Lakeside Hotel, pop into the ferry café for a quick coffee or ice cream, or hop on the boat to Bowness or Ambleside for a more leisurely day out.

Kids (and grown-ups) love the Aquarium of the Lakes, and the Lakeside & Haverthwaite steam railway is pure nostalgia, think vintage carriages, puffs of steam, and countryside views straight from a storybook.

Closer still, and just a potter through the village, is the Stott Park Bobbin Mill, a real slice of industrial heritage. Despite its rural position, Red Deer Lodge feels wonderfully connected. The M6 is under 30 minutes by car. Windermere village, with its train station, is reachable in under half an hour. And yet, return home, and all you'll hear are birdsong and branches shifting in the breeze.



Ask the Owners

where do you go when you need...



milk & bread?

Ulverston, which is a 15-minute drive away, has a selection of supermarkets, including Booths.



a pub meal?

The Swan at Newby Bridge is just a 35-minute walk away and serves great food as well as having a brilliant atmosphere.



a walk from the door?

So many! High Dam Tarn is a good walk, and from there you can go to the Rusland and High Stott areas.



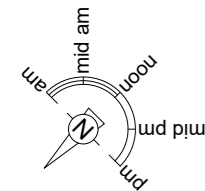
a restaurant?

The Lakeside Hotel is a great place to enjoy a good meal.



Score	Energy rating	Current	Potential
92+	A		
81-91	B		81 B
69-80	C	72 C	
55-68	D		
39-54	E		
21-38	F		
1-20	G		

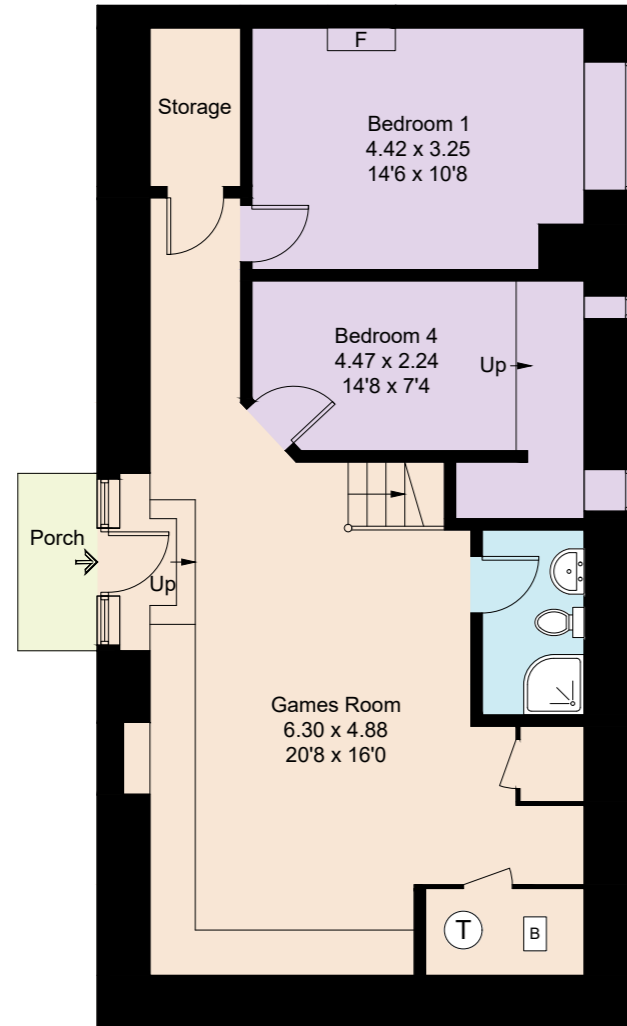
Red Deer Lodge



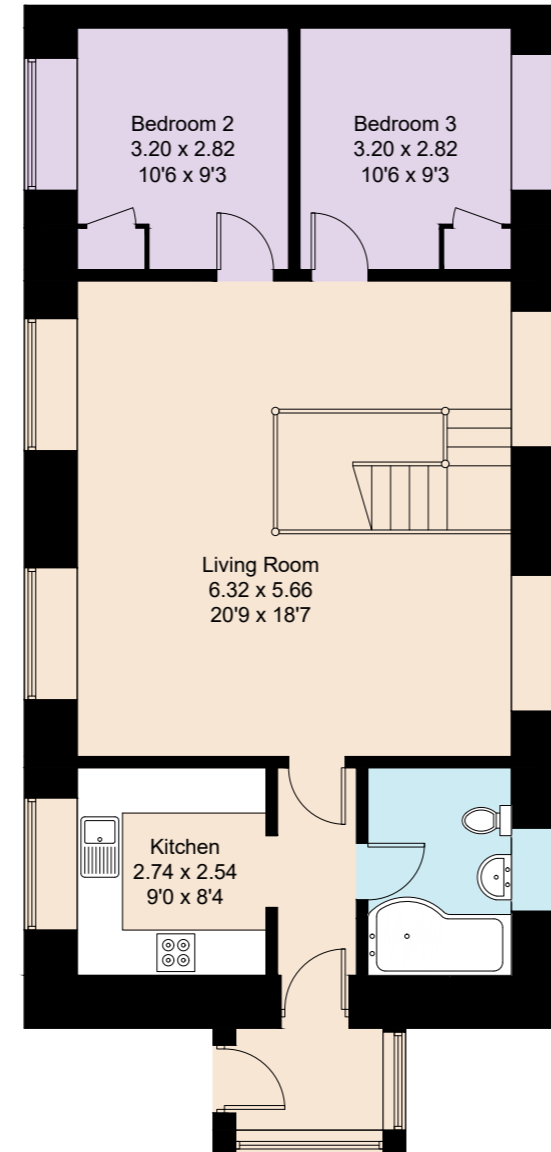
Approximate Gross Internal Area = 150.42 sq m / 1623 sq ft

Illustration for identification purposes only, measurements are approximate, not to scale. Fourlabs.co © 2025 (ID1216221)

Ground Floor



First Floor



Finer Details:



Home:

- Stunning 4-bedroom detached house
- Brimming with character and charm
- Full of history dating back to the 1650s
- Great home for entertaining the whole family

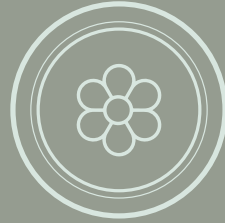
Services:

- Mains water and electricity
- Private drainage
- Oil heating
- Most mobile providers reach this area
- Fast internet speeds

Grounds and Location:

- Beautiful views overlooking the countryside
- South-east-facing garden
- 15-minute drive to Ulverston
- Parking for 3 cars

* Items shown or described in this brochure are for illustrative purposes only and may not be included in the sale



RED DEER LODGE

Red Deer Lodge, Finsthwaite, Ulverston, LA12 8BJ

Directions: From the A590 cross the bridge at The Swan Hotel and follow the signs for Lakeside. Follow the road past Lakeside for approximately 1 mile until you reach the Bobbin Mill, and take a left just before it. This road will lead you into Finsthwaite village. Red Deer Lodge is on the right on this road, after the turning for High Dam, opposite a large field. It shares a small part of the drive with Roe Deer Lodge.



WHAT3WORDS: [singled.clots.torso](https://www.what3words.com/singled.clots.torso)

To view Red Deer Lodge

Call: 015394 88811

Email: team@ashdownjones.co.uk

ASHDOWNJONES



SCAN ME
TO BOOK A
VIEWING